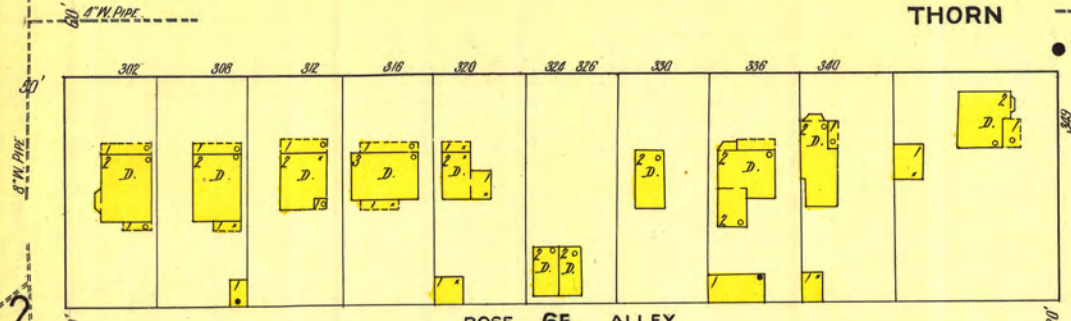


MAY 1911
SEWICKLEY
PA.

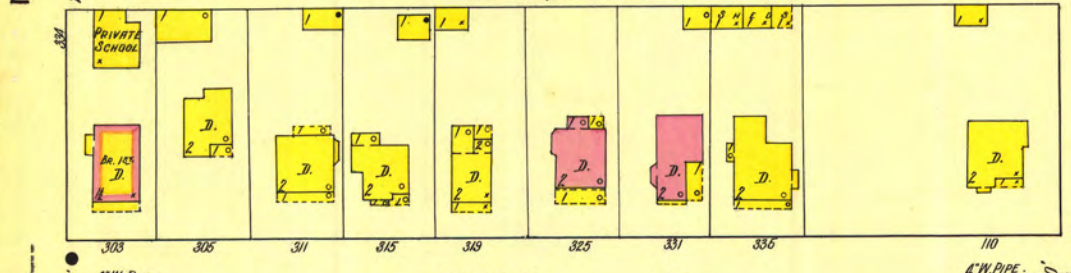
THORN

5

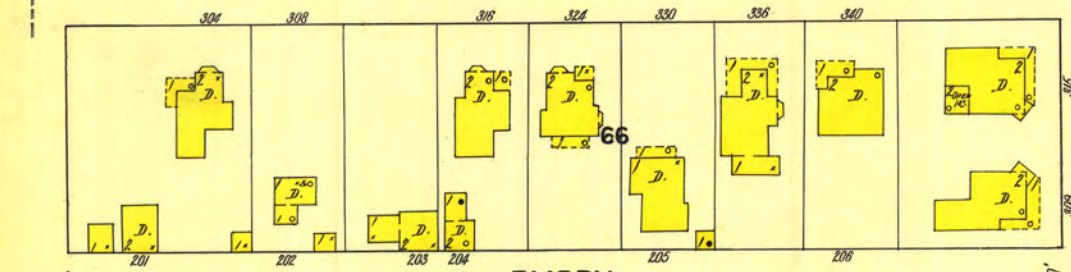
4



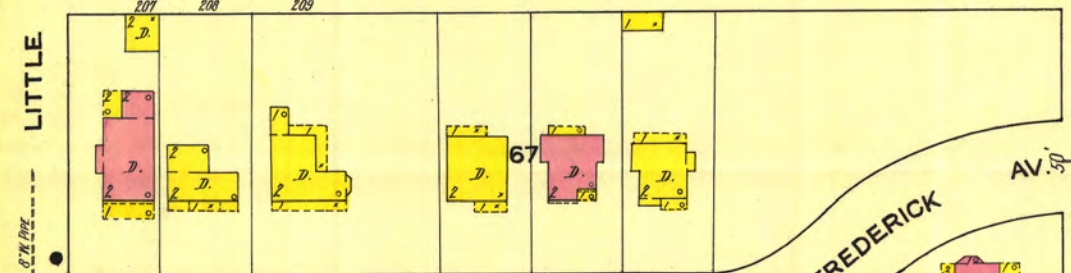
ROSE 65 ALLEY



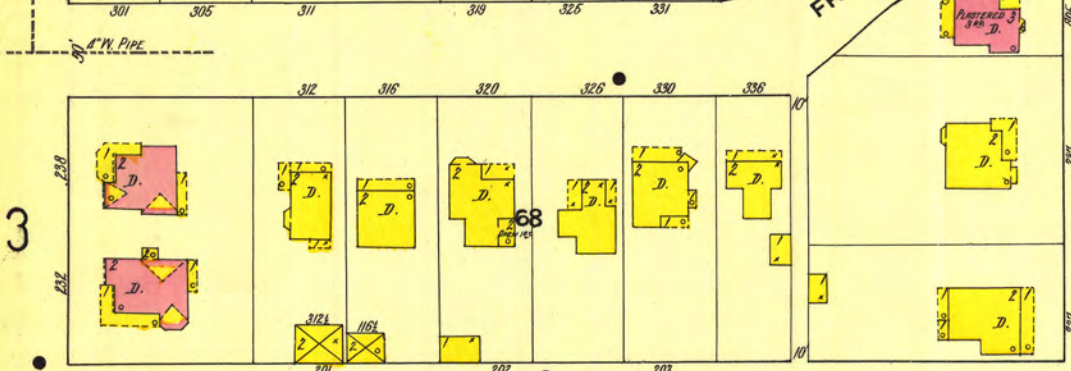
HENRY AV.



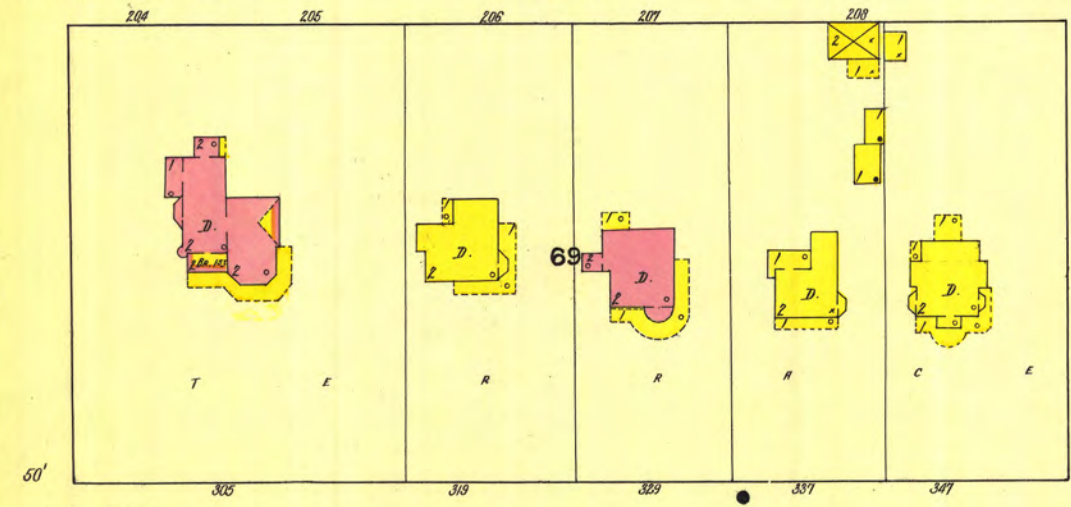
EMERY



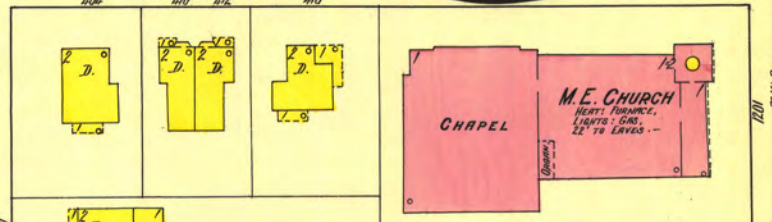
FREDERICK AV.



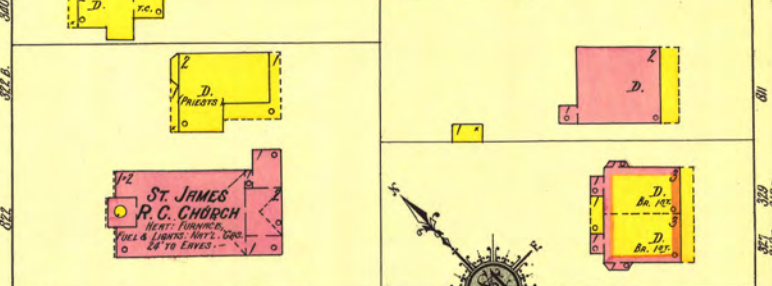
ELWICK



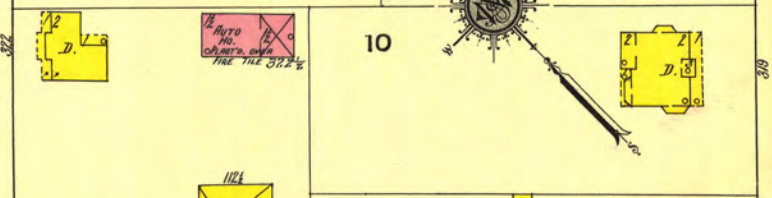
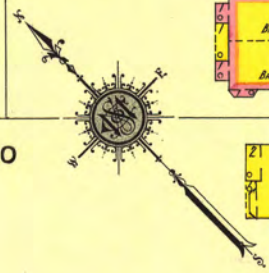
BANK



M.E. CHURCH
CHapel
HEAVY FURNACE,
LIGHTS - GAS,
22' TO EAVES -

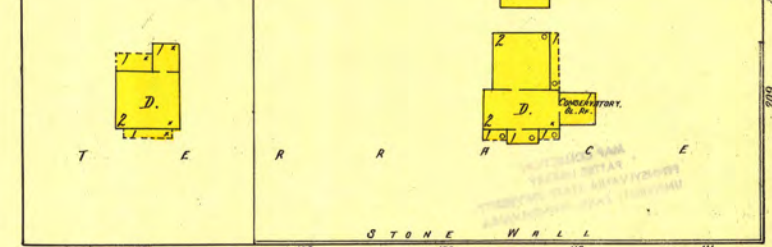
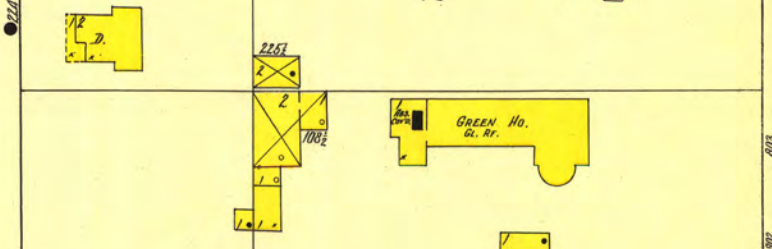
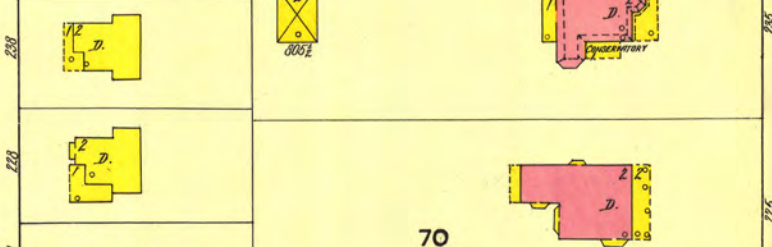
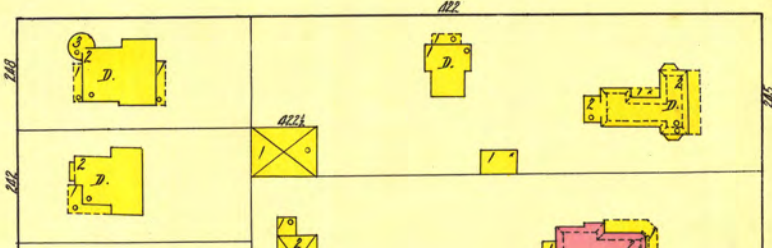
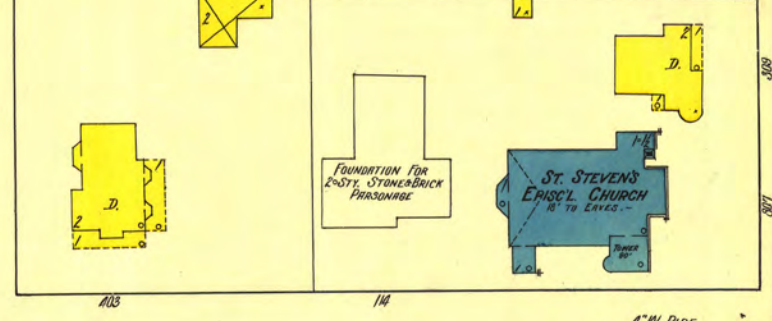


ST. JAMES
R.C. CHURCH
HEAVY FURNACE,
LIGHTS - GAS,
24' TO EAVES -

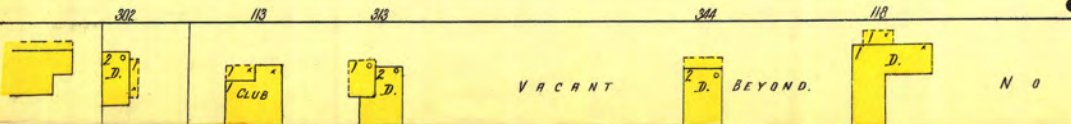


FOUNDATION FOR
ST. STONERBUCK
PARSONAGE

ST. STEVENS
EPISC. CHURCH
R. TO EAVES -



Scale of Feet.



VACANT

BEYOND.

N O

E X P O S U R E

Map Division
Aug 12 '55
RIVER
FIVE
4
R.S.
24-5-11